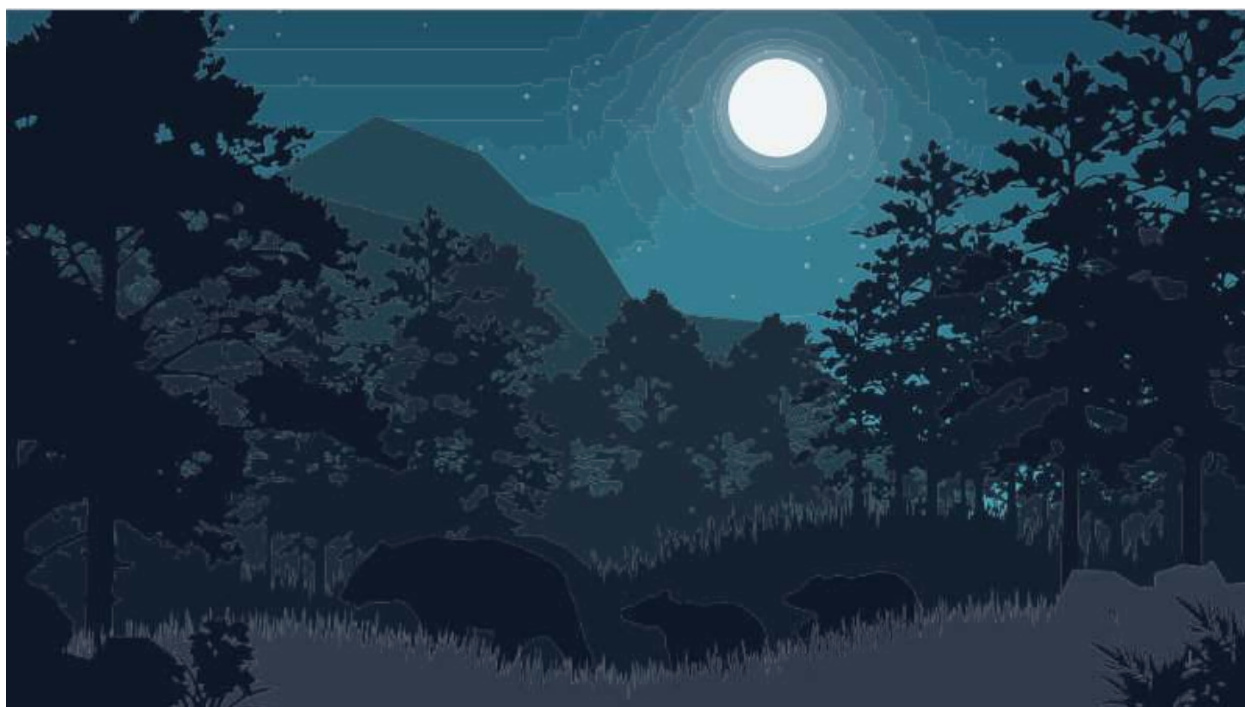


Nocturnal Animal Facts

Nocturnal animals are animals that sleep during the day, but are awake at night. The animals below are nocturnal animals.



Bats eat lots of insects each night. They eat mosquitos, beetles, grasshoppers, stink bugs, and many more types of insects. This is good, so we do not get too many mosquito bites. This is also good for farmers, so insects do not eat their crops.



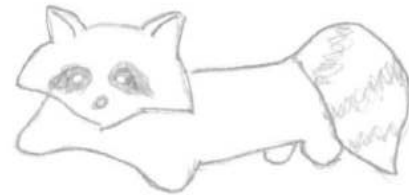
Fireflies shine their lights each night. Their lights can be yellow, green, or orange depending on what type of firefly they are. Did you know that fireflies are not flies? Fireflies are a type of beetle.



Owls are a type of bird. They can rotate their necks 270 degrees, but they cannot move their eyes like we can. Their eyes are immobile. Some owls hoot, but other types screech or whinny.



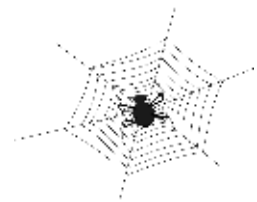
Raccoons look like they are wearing a mask. The dark fur mask reduces glares from lights so they can see better. They have a striped tails and little feet that look a lot like hands. Raccoons use their feet with long toes to eat. They can open jars, boxes, and doorknobs.



Skunks have fluffy white and black tails. They want to stand out to scare you and predators away! If you see one, stay away! They spray a stinky musk. Many skunks do a warning dance before they spray.



Spiders are not insects. They have eight legs and most have eight eyes! Many spiders spin webs to catch their prey. Most spiders are not dangerous to humans, but some are!



Nocturnal or Diurnal

Nocturnal animals sleep during the day. They are awake at night.
Diurnal animals sleep during the night. They are awake during the day.
What are you: nocturnal or diurnal?

Habitat

A habitat is the natural home of an animal or plant. The nocturnal animals you created lived in a forest habitat. Nocturnal animals live in all sorts of habitats. For example, many bats live in a cave habitat. Most arctic foxes are nocturnal and live in the arctic. Most scorpions are nocturnal and live in the desert. What habitat do you live in? I live in a city.

Can you match these nocturnal animals with their habitat?

Forest



River



Desert



Arctic



Thank you openclipart.org for your wonderful clipart!